



# BUREAU OF LABOR MARKET INFORMATION AND STRATEGIC INITIATIVES

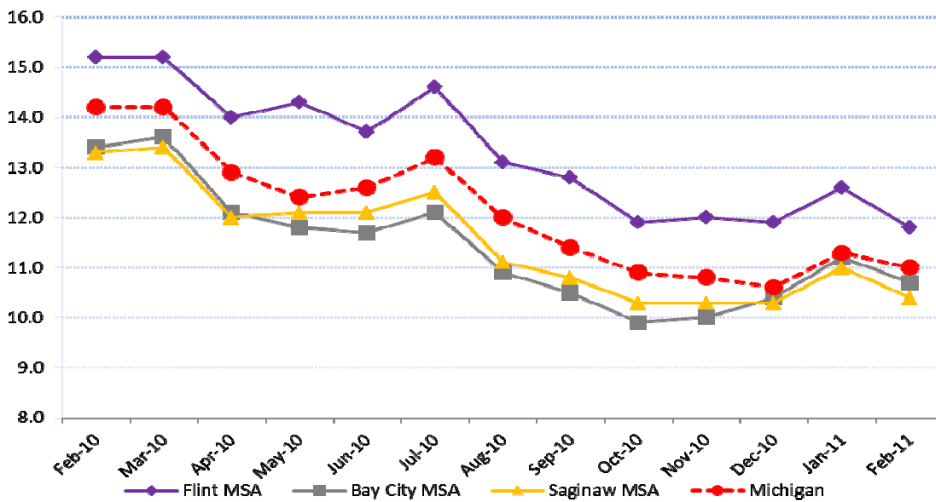
FEBRUARY 2011 — MID-MICHIGAN

Rhea Acuna • 614 Johnson St • Saginaw, MI 48607 • 989.776.1508 • acunar@michigan.gov

## FEBRUARY JOBLESS RATES TRACK DOWNWARD

Regional jobless rates followed the statewide trend with the majority of local areas exhibiting rate declines in February. Employment levels were slightly up among the local metropolitan statistical areas while labor force levels were little changed over the month. Michigan's seasonally unadjusted jobless rate decreased by 0.3 percentage points to 11.0 percent. **(Figure 1)**

Figure 1: Monthly Jobless Rates, February 2010 – February 2011



The three local metro areas experienced similar declines in jobless rates over the month. The largest jobless rate reduction was posted by the Flint MSA, moving down by 0.8 percentage points to 11.8 percent. Jobless rates in the Saginaw MSA (10.4 percent) and the Bay City MSA (10.7 percent) closely followed, decreasing by 0.6 percentage points and 0.5 percentage points, respectively. Over the year, jobless rates fell by roughly three percentage points in all three regional metro areas. Jobless rates in the Saginaw MSA (-2.9 percentage points) and the Bay City MSA (-2.7 percentage points) dropped by slightly below three percentage points, while the Flint MSA exhibited the largest reduction at -3.4 percentage points. **(Table 1)**

Total labor force was essentially flat in the region during the month of February. Labor force levels

in the Bay City MSA (+0.2 percent) and the Saginaw MSA (+0.5 percent) advanced by less than one percent, while the labor force in the Flint MSA was unchanged. Between February 2010 and February 2011, movements in the labor force levels were mixed among the local metro areas. The labor force level in the Flint MSA fell by 2.3 percent or 4,400. In contrast, total labor force in the Saginaw MSA and the Bay City MSA was stable over the year.

Over the month, employment levels increased by approximately one percent in all three metro areas. Compared to a year ago, employment levels registered larger increases with the Bay City MSA (+3.0 percent) and the Saginaw MSA (+3.5 percent) exhibiting the more pronounced growth. Employment in the Flint MSA increased slightly by 1.7 percent over the year.

February jobless rates fell for 11 of the 12 smaller labor market areas in the region. The Lapeer LMA recorded the only jobless rate increase over the month, inching up by 0.3 percentage points. Declines ranged from -0.2 percentage points in the Midland LMA to -1.3 percentage points in the Iosco LMA, with a median decline of 0.6 percentage points. The Arenac LMA and the Iosco LMA tied for the highest jobless rate in the region at 16.0 percent. The Midland LMA continues to be the only labor market in the region to exhibit a jobless rate below double digits. Since February 2010, all of the smaller labor markets exhibited solid drops in jobless rates. Over-the-year jobless rate reductions ranged from -2.2 percentage points in the Midland LMA to -4.8 percentage points in the Sanilac LMA, with a notable median decline of 3.7 percentage points. **(Tables 2 and 3)**

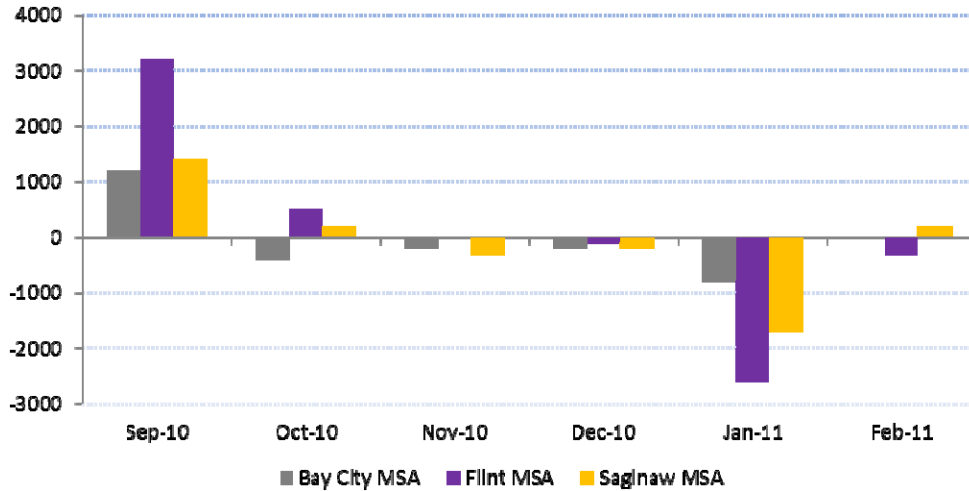
Labor force levels generally declined in the region with nine labor market areas registering over-the-month reductions. Decreases were modest ranging from -0.1 percent in the Tuscola LMA to -1.1 percent in the Sanilac LMA. Three labor market areas posted minor labor force gains: Roscommon (+0.3 percent), Midland (+0.5 percent), and Shiawassee (+0.8 percent). Since February 2010, 11 of the 12 labor markets recorded notable labor force reductions, with a median decline of 2.4 percent. The Midland LMA was the only area in the region to post an increase in the workforce, inching up by 0.5 percent.

Total employment in nine local labor markets advanced over the month by a median of 0.6 percent. The largest employment percentage growth was exhibited by the Shiawassee LMA (+1.5 percent), followed closely by the Roscommon LMA (+1.2 percent). Employment in the Sanilac LMA (-0.3 percent) and the Lapeer LMA (-0.5 percent) edged down slightly over the month. From February 2010 to February 2011, the majority of the smaller labor markets exhibited gains in employment. Over-the-year increases in total employment ranged from +0.7 percent in the Clare LMA to +3.5 percent in the Roscommon LMA. The Iosco LMA (-0.3 percent) was the only regional labor market to register an employment decline over the year.

## PAYROLL JOBS REMAINED STABLE OVER THE MONTH

February nonfarm payroll jobs were little changed in the region as multiple industry sectors posted offsetting modest employment gains and reductions. Seasonal factors continue to have an impact as cuts in *Construction* and *Retail Trade* were evident throughout the region. Industry employment typically remains flat in the Bay City MSA and the Saginaw MSA in February. However, the typical seasonal trend did not hold for the Flint MSA, which often records solid job gains in February due to seasonal recalls in the auto industry. Due to revised auto production schedules, jobs in the manufacturing sector were atypically stable for January and February 2011. (Table 4)

**Figure 2: Nonfarm Payroll Job Changes in the Past Six Months, Sept 2010 – Feb 2011**



February payroll jobs remained flat in the **Bay City MSA**. Seasonal job losses in *Construction* (-100) and *Leisure and Hospitality* (-100) were offset by minor advances in *Educational and Health Services* (+100).

Between February 2010 and February 2011, nonfarm jobs inched up by 0.3 percent or 100. Nearly all primary industries reported small changes over the year. The *Government* sector recorded the most significant cuts over the year, declining by 5.1 percent or 300 jobs. The most notable employment gains were in the *Manufacturing* (+5.3 percent) and the *Educational and Health Services* (+3.3 percent) sectors, each adding 200 since February 2010.

The **Flint MSA** registered minor payroll job losses during the month of February, edging downward by 300 or 0.2 percent. The largest reductions were exhibited in *Trade, Transportation, and Utilities* (-400) mostly due to continued seasonal cuts in *Retail Trade*. Both industries in the goods producing sector – *Construction* and *Manufacturing* – declined by 200 over the month. Employment gains in *Educational and Health Services* (+300) and *Professional and Business Services* (+100) somewhat offset these job losses.

Compared to February 2010, nonfarm payroll jobs decreased by 1,200 or 0.9 percent. Employment changes were concentrated within the service providing industries as the goods producing sector remained flat over the year. The most pronounced job losses were recorded in *Government* (-1,000), followed by lesser cuts in *Leisure and Hospitality* (-600), *Financial Activities* (-200), and *Trade, Transportation, and Utilities* (-100).

Nonfarm employment inched up by 200 or 0.2 percent in the **Saginaw MSA** in February. Changes in industry employment were widespread with the *Government* sector recording the most significant change, adding 300 over the month. Smaller job gains were posted in *Manufacturing* (+200), *Financial Activities* (+100), and *Educational and Health Services* (+100). Employment cuts were registered in four primary industry sectors: *Trade, Transportation, and Utilities* (-200), *Information* (-100), *Leisure and Hospitality* (-100), and *Construction* (-100).

Since February 2010, payroll jobs have advanced by 1.6 percent or 1,300. The most substantial employment gains were posted in the *Manufacturing* sector, increasing by 1,000 or 10.8 percent. This sector gradually added jobs throughout 2010. Over-the-year job losses were minimal with *Leisure and Hospitality* (-300) and *Government* (-100) registering small cuts.

**Table 1: Metropolitan Statistical Areas**

	February 2011*	January 2010	February 2010	Change/ Month	%Change / Month	Change/ Year	%Change / Year
<b>FLINT MSA</b>							
Labor Force	188,100	188,100	192,500	0	0.0%	-4,400	-2.3%
Employed	165,900	164,400	163,200	1,500	0.9%	2,700	1.7%
Unemployed	22,200	23,600	29,300	-1,400	-5.9%	-7,100	-24.2%
Unemployment Rate	11.8	12.6	15.2	-0.8		-3.4	
<b>SAGINAW MSA</b>							
Labor Force	91,700	91,200	91,500	500	0.5%	200	0.2%
Employed	82,100	81,200	79,300	900	1.1%	2,800	3.5%
Unemployed	9,600	10,000	12,100	-400	-4.0%	-2,500	-20.7%
Unemployment Rate	10.4	11.0	13.3	-0.6		-2.9	
<b>BAY CITY MSA</b>							
Labor Force	53,100	53,000	53,100	100	0.2%	0	0.0%
Employed	47,400	47,000	46,000	400	0.9%	1,400	3.0%
Unemployed	5,700	6,000	7,100	-300	-5.0%	-1,400	-19.7%
Unemployment Rate	10.7	11.2	13.4	-0.5		-2.7	
<b>MICHIGAN</b>							
Labor Force	4,701,700	4,697,000	4,781,200	4,700	0.1%	-79,500	-1.7%
Employed	4,184,600	4,167,600	4,104,700	17,000	0.4%	79,900	1.9%
Unemployed	517,100	529,400	676,600	-12,300	-2.3%	-159,500	-23.6%
Unemployment Rate	11.0	11.3	14.2	-0.3		-3.2	
By Place of Residence							
Not Seasonally Adjusted							
Rates Calculated with Unrounded Data							
* Preliminary							

**Table 2: Labor Market Areas**

	February 2011*	January 2010	February 2010	Change/ Month	%Change / Month	Change/ Year	%Change / Year
<b>HURON LMA</b>							
Labor Force	15,750	15,850	16,100	-100	-0.6%	-350	-2.2%
Employed	13,850	13,850	13,525	0	0.0%	325	2.4%
Unemployed	1,900	1,975	2,575	-75	-3.8%	-675	-26.2%
Unemployment Rate	12.0	12.5	16.0	-0.5		-4.0	
<b>LAPEER LMA</b>							
Labor Force	41,850	41,950	43,400	-100	-0.2%	-1,550	-3.6%
Employed	35,350	35,525	35,025	-175	-0.5%	325	0.9%
Unemployed	6,500	6,425	8,375	75	1.2%	-1,875	-22.4%
Unemployment Rate	15.6	15.3	19.3	0.3		-3.7	
<b>MIDLAND LMA</b>							
Labor Force	41,500	41,275	41,275	225	0.5%	225	0.5%
Employed	38,000	37,725	36,925	275	0.7%	1,075	2.9%
Unemployed	3,500	3,575	4,375	-75	-2.1%	-875	-20.0%
Unemployment Rate	8.4	8.6	10.6	-0.2		-2.2	
<b>SANILAC LMA</b>							
Labor Force	19,725	19,950	20,525	-225	-1.1%	-800	-3.9%
Employed	17,025	17,075	16,725	-50	-0.3%	300	1.8%
Unemployed	2,700	2,875	3,800	-175	-6.1%	-1,100	-28.9%
Unemployment Rate	13.7	14.4	18.5	-0.7		-4.8	
<b>SHIAWASSEE LMA</b>							
Labor Force	33,575	33,325	34,250	250	0.8%	-675	-2.0%
Employed	29,625	29,200	29,000	425	1.5%	625	2.2%
Unemployed	3,950	4,125	5,250	-175	-4.2%	-1,300	-24.8%
Unemployment Rate	11.8	12.4	15.3	-0.6		-3.5	
<b>TUSCOLA LMA</b>							
Labor Force	26,525	26,550	27,375	-25	-0.1%	-850	-3.1%
Employed	23,100	22,950	22,775	150	0.7%	325	1.4%
Unemployed	3,425	3,600	4,600	-175	-4.9%	-1,175	-25.5%
Unemployment Rate	12.9	13.5	16.8	-0.6		-3.9	
By Place of Residence							
Not Seasonally Adjusted							
Rates Calculated with Unrounded Data							
* Preliminary							

**Table 3: Labor Market Areas Continued**

	February 2011*	January 2010	February 2010	Change/ Month	%Change / Month	Change/ Year	%Change / Year
<b>ARENAC LMA</b>							
Labor Force	7,150	7,200	7,275	-50	-0.7%	-125	-1.7%
Employed	6,000	5,975	5,800	25	0.4%	200	3.4%
Unemployed	1,150	1,225	1,475	-75	-6.1%	-325	-22.0%
Unemployment Rate	16.0	17.1	20.2	-1.1		-4.2	
<b>CLARE LMA</b>							
Labor Force	12,325	12,375	12,775	-50	-0.4%	-450	-3.5%
Employed	10,525	10,475	10,450	50	0.5%	75	0.7%
Unemployed	1,800	1,900	2,325	-100	-5.3%	-525	-22.6%
Unemployment Rate	14.5	15.4	18.3	-0.9		-3.8	
<b>GLADWIN LMA</b>							
Labor Force	9,850	9,900	10,075	-50	-0.5%	-225	-2.2%
Employed	8,325	8,300	8,175	25	0.3%	150	1.8%
Unemployed	1,525	1,600	1,925	-75	-4.7%	-400	-20.8%
Unemployment Rate	15.5	16.1	19.1	-0.6		-3.6	
<b>IOSCO LMA</b>							
Labor Force	9,500	9,575	10,100	-75	-0.8%	-600	-5.9%
Employed	7,975	7,925	8,000	50	0.6%	-25	-0.3%
Unemployed	1,525	1,650	2,100	-125	-7.6%	-575	-27.4%
Unemployment Rate	16.0	17.3	20.7	-1.3		-4.7	
<b>OGEMAW LMA</b>							
Labor Force	9,325	9,375	9,375	-50	-0.5%	-50	-0.5%
Employed	8,100	8,075	7,900	25	0.3%	200	2.5%
Unemployed	1,225	1,300	1,500	-75	-5.8%	-275	-18.3%
Unemployment Rate	13.1	13.8	15.9	-0.7		-2.8	
<b>ROSCOMMON LMA</b>							
Labor Force	9,550	9,525	9,625	25	0.3%	-75	-0.8%
Employed	8,150	8,050	7,875	100	1.2%	275	3.5%
Unemployed	1,400	1,450	1,750	-50	-3.4%	-350	-20.0%
Unemployment Rate	14.7	15.3	18.1	-0.6		-3.4	
By Place of Residence							
Not Seasonally Adjusted							
Rates Calculated with Unrounded Data							
* Preliminary							

**Table 4: Nonfarm Payroll Jobs**

	February 2011*	January 2010	February 2010	Change/ Month	%Change / Month	Change/ Year	%Change / Year
<b>BAY CITY MSA</b>							
Total Nonfarm	35,600	35,600	35,500	0	0.0%	100	0.3%
Goods Producing	4,900	5,000	4,600	-100	-2.0%	300	6.5%
Mining, Logging and Construction	900	1,000	800	-100	-10.0%	100	12.5%
Manufacturing	4,000	4,000	3,800	0	0.0%	200	5.3%
Service Providing	30,700	30,600	30,900	100	0.3%	-200	-0.6%
Trade, Transportation, and Utilities	7,400	7,400	7,400	0	0.0%	0	0.0%
Financial Activities	1,600	1,600	1,500	0	0.0%	100	6.7%
Professional and Business Services	3,000	3,000	3,000	0	0.0%	0	0.0%
Educational and Health Services	6,300	6,200	6,100	100	1.6%	200	3.3%
Leisure and Hospitality	4,400	4,500	4,500	-100	-2.2%	-100	-2.2%
Other Services	1,900	1,800	2,000	100	5.6%	-100	-5.0%
Government	5,600	5,600	5,900	0	0.0%	-300	-5.1%
<b>FLINT MSA</b>							
Total Nonfarm	130,600	130,900	131,800	-300	-0.2%	-1,200	-0.9%
Goods Producing	12,400	12,800	12,400	-400	-3.1%	0	0.0%
Mining, Logging and Construction	3,000	3,200	3,000	-200	-6.3%	0	0.0%
Manufacturing	9,400	9,600	9,400	-200	-2.1%	0	0.0%
Service Providing	118,200	118,100	119,400	100	0.1%	-1,200	-1.0%
Trade, Transportation, and Utilities	26,900	27,300	27,000	-400	-1.5%	-100	-0.4%
Information	3,300	3,300	3,100	0	0.0%	200	6.5%
Financial Activities	6,300	6,300	6,500	0	0.0%	-200	-3.1%
Professional and Business Services	12,700	12,600	12,300	100	0.8%	400	3.3%
Educational and Health Services	27,100	26,800	26,800	300	1.1%	300	1.1%
Leisure and Hospitality	13,100	13,100	13,700	0	0.0%	-600	-4.4%
Other Services	6,000	5,900	6,200	100	1.7%	-200	-3.2%
Government	22,800	22,800	23,800	0	0.0%	-1,000	-4.2%
<b>SAGINAW MSA</b>							
Total Nonfarm	82,400	82,200	81,100	200	0.2%	1,300	1.6%
Goods Producing	12,700	12,600	11,500	100	0.8%	1,200	10.4%
Mining, Logging and Construction	2,400	2,500	2,200	-100	-4.0%	200	9.1%
Manufacturing	10,300	10,100	9,300	200	2.0%	1,000	10.8%
Service Providing	69,700	69,600	69,600	100	0.1%	100	0.1%
Trade, Transportation, and Utilities	15,600	15,800	15,300	-200	-1.3%	300	2.0%
Information	1,300	1,400	1,300	-100	-7.1%	0	0.0%
Financial Activities	3,900	3,800	3,800	100	2.6%	100	2.6%
Professional and Business Services	9,100	9,100	9,100	0	0.0%	0	0.0%
Educational and Health Services	15,800	15,700	15,700	100	0.6%	100	0.6%
Leisure and Hospitality	7,700	7,800	8,000	-100	-1.3%	-300	-3.8%
Other Services	3,900	3,900	3,900	0	0.0%	0	0.0%
Government	12,400	12,100	12,500	300	2.5%	-100	-0.8%
By Place of Employment							
Not Seasonally Adjusted							
*Preliminary							

**Appendix 1: Counties of Northeastern Michigan**

	February 2011*	January 2010	February 2010	Change/ Month	%Change / Month	Change/ Year	%Change / Year
<b>ALCONA LMA</b>							
Labor Force	3,725	3,750	3,975	-25	-0.7%	-250	-6.3%
Employed	3,075	3,050	3,075	25	0.8%	0	0.0%
Unemployed	650	700	900	-50	-7.1%	-250	-27.8%
Unemployment Rate	17.6	18.6	22.4	-1.0		-4.8	
<b>ALPENA LMA</b>							
Labor Force	13,925	13,850	14,425	75	0.5%	-500	-3.5%
Employed	12,200	12,100	12,200	100	0.8%	0	0.0%
Unemployed	1,725	1,750	2,200	-25	-1.4%	-475	-21.6%
Unemployment Rate	12.4	12.6	15.3	-0.2		-2.9	
<b>CHEBOYGAN LMA</b>							
Labor Force	10,350	10,250	10,850	100	1.0%	-500	-4.6%
Employed	8,500	8,375	8,525	125	1.5%	-25	-0.3%
Unemployed	1,850	1,875	2,325	-25	-1.3%	-475	-20.4%
Unemployment Rate	17.8	18.2	21.3	-0.4		-3.5	
<b>CRAWFORD LMA</b>							
Labor Force	5,825	5,800	5,925	25	0.4%	-100	-1.7%
Employed	5,075	5,025	5,025	50	1.0%	50	1.0%
Unemployed	750	775	900	-25	-3.2%	-150	-16.7%
Unemployment Rate	13.0	13.5	15.0	-0.5		-2.0	
<b>MONTMORENCY LMA</b>							
Labor Force	3,725	3,750	3,875	-25	-0.7%	-150	-3.9%
Employed	2,975	2,975	2,950	0	0.0%	25	0.8%
Unemployed	750	775	925	-25	-3.2%	-175	-18.9%
Unemployment Rate	20.1	20.9	23.8	-0.8		-3.7	
<b>OSCODA LMA</b>							
Labor Force	3,575	3,575	3,675	0	0.0%	-100	-2.7%
Employed	2,875	2,850	2,800	25	0.9%	75	2.7%
Unemployed	700	725	875	-25	-3.4%	-175	-20.0%
Unemployment Rate	19.5	20.3	24.1	-0.8		-4.6	
<b>OTSEGO LMA</b>							
Labor Force	10,975	11,050	11,250	-75	-0.7%	-275	-2.4%
Employed	9,425	9,450	9,325	-25	-0.3%	100	1.1%
Unemployed	1,550	1,600	1,925	-50	-3.1%	-375	-19.5%
Unemployment Rate	14.1	14.5	17.2	-0.4		-3.1	
<b>PRESQUE ISLE LMA</b>							
Labor Force	5,700	5,650	5,850	50	0.9%	-150	-2.6%
Employed	4,450	4,475	4,400	-25	-0.6%	50	1.1%
Unemployed	1,250	1,150	1,475	100	8.7%	-225	-15.3%
Unemployment Rate	21.9	20.5	25.1	1.4		-3.2	
By Place of Residence							
Not Seasonally Adjusted							
Rates Calculated with Unrounded Data							
* Preliminary							

## Appendix 2: Michigan Works! Areas

	February 2011*	January 2010	February 2010	Change/ Month	%Change / Month	Change/ Year	%Change / Year
<b>CAREER ALLIANCE, INC.</b>							
Labor Force	221,700	221,375	226,700	325	0.1%	-5,000	-2.2%
Employed	195,500	193,625	192,200	1,875	1.0%	3,300	1.7%
Unemployed	26,200	27,750	34,500	-1,550	-5.6%	-8,300	-24.1%
Unemployment Rate	11.8	12.5	15.2	-0.7		-3.4	
<b>GREAT LAKES BAY</b>							
Labor Force	186,325	185,500	185,875	825	0.4%	450	0.2%
Employed	167,575	165,925	162,250	1,650	1.0%	5,325	3.3%
Unemployed	18,750	19,575	23,625	-825	-4.2%	-4,875	-20.6%
Unemployment Rate	10.1	10.6	12.7	-0.5		-2.6	
<b>THUMB WORKS</b>							
Labor Force	103,850	104,275	107,400	-425	-0.4%	-3,550	-3.3%
Employed	89,325	89,400	88,050	-75	-0.1%	1,275	1.4%
Unemployed	14,525	14,875	19,350	-350	-2.4%	-4,825	-24.9%
Unemployment Rate	14.0	14.3	18.0	-0.3		-4.0	
<b>NORTHEAST MICHIGAN</b>							
Labor Force	57,775	57,650	59,800	125	0.2%	-2,025	-3.4%
Employed	48,550	48,300	48,300	250	0.5%	250	0.5%
Unemployed	9,225	9,350	11,500	-125	-1.3%	-2,275	-19.8%
Unemployment Rate	16.0	16.2	19.2	-0.3		-3.3	
<b>REGION 7B</b>							
Labor Force	57,700	57,950	59,250	-250	-0.4%	-1,550	-2.6%
Employed	49,100	48,800	48,175	300	0.6%	925	1.9%
Unemployed	8,600	9,150	11,050	-550	-6.0%	-2,450	-22.2%
Unemployment Rate	14.9	15.8	18.7	-0.9		-3.8	
By Place of Residence							
Not Seasonally Adjusted							
Rates Calculated with Unrounded Data							
* Preliminary							

For additional information or other labor market analysis, please contact Rhea Acuna, Regional Economic Analyst with the Michigan Department of Energy, Labor & Economic Growth, Bureau of Labor Market Information & Strategic Initiatives at (989) 776-1508 or [acunar@michigan.gov](mailto:acunar@michigan.gov).

Please visit our website at [www.michigan.gov/lmi](http://www.michigan.gov/lmi)